

RS232 To 3.3V TTL User Guide

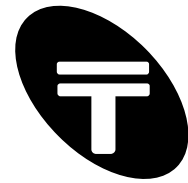
RS232 to 3.3V TTL Signal Converter Modules

P/N: 9651
Document version: 1.10
Date: October 2011

Information furnished is believed to be accurate and reliable. However, Tronisoft Limited assumes no responsibility, consequential or otherwise of use of such information.
Email support@tronisoft.com with suggestions or to report document inaccuracies, omissions and errors.

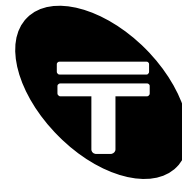
Specifications mentioned in this publication are subject to change without notice. This publication supersedes and replaces all information previously supplied.

© Copyright 2011 Tronisoft Limited - Printed in England, United Kingdom - All Rights Reserved.
<http://www.tronisoft.com>



RS232 To 3.3V TTL User Guide

1	IMPORTANT INFORMATION, NOTICES AND ACKNOWLEDGEMENTS.....	2
1.1	TRADEMARKS	2
1.2	DISCLAIMER	2
1.3	SAFETY AND REGULATORY COMPLIANCE	2
1.4	ROHS COMPLIANCE	2
1.5	DOCUMENT REVISION	2
2	INTRODUCTION.....	3
2.1	FEATURES LIST	3
2.2	BLOCK DIAGRAM – RS232 TO TTL MODULE	4
3	HARDWARE DESCRIPTION	4
3.1	POWER SUPPLY	5
3.2	DIGITAL 3.3V TTL CONNECTION	5
3.3	RS232 PORT (9 PIN D FEMALE)	6
3.4	STATUS LEDs.....	7
3.5	MODULE SPECIFICATION	7
3.6	BOARD OUTLINE AND MOUNTING HOLES	8
	QUICK START – DEMONSTRATION	9
	APPENDIX A – PINOUT AND SIGNALS FOR THE PC RS232 CONNECTOR.....	10



1 Important Information, Notices and Acknowledgements

No parts of this work may be reproduced in any form or by any means - graphic, electronic, or mechanical, including photocopying, recording, taping, or information storage and retrieval systems without the written permission of the publisher and author. All rights reserved.

1.1 Trademarks

Products that are referred to in this document may be either trademarks and/or registered trademarks of the respective owners. The publisher and the author make no claim to these trademarks.

1.2 Disclaimer

Information furnished is believed to be accurate and reliable. However, the publisher and the author assume no responsibility, consequential or otherwise, for errors or omissions or use of such information contained in this document or from the use of programs and source code that may accompany it. In no event shall the publisher and the author be liable for any loss of profit or any other commercial damage caused or alleged to have been caused directly or indirectly by this document.

1.3 Safety and Regulatory Compliance

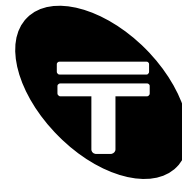
Tronisoft Limited takes considerable care in designing products with safety and ease of use in mind. However, Tronisoft's products are not authorized for use as critical components in life support or safety critical devices or systems. The product(s) contained within this User Guide are OEM products. These may be suitable only for system integrators and electronics enthusiasts. By using, testing or integrating the product(s) described in this User Guide, you accept responsibility for ensuring that relevant local regulatory compliancy requirements are met depending on the country of use. Follow any recommendations and take note of any cautions or warnings stated within this User Guide. Generally, do not use Tronisoft products without first reading their respective User Guide.

1.4 RoHS Compliance

Tronisoft has taken reasonable steps within its supply chain to source components that are free of lead and other environmentally hazardous parts and assures RoHS compliancy.

1.5 Document Revision

Version	Date	Summary of changes
V1.00	April 2008	First version.
V1.01	September 2008	Added descriptions for new options
V1.10	October 2011	Major release and modification of 4204 options.



2 Introduction

The RS232 to TTL 3.3V Signal Converter Module is a professional module for projects requiring PC/Laptop RS232 interface to 3.3V TTL logic. This module converts signals between RS232 voltage levels and 3.3V TTL voltage levels. It is bi-directional, where TTL signals are converted to RS232 levels and RS232 levels are converted to 3.3V TTL levels. It is ideal for use in pc interfacing, microcontroller based projects, robotics, or for experimental and educational purposes. This document is applicable to the 4204, 4205 and 4206 versions of the modules. Table 1 highlights the main differences.

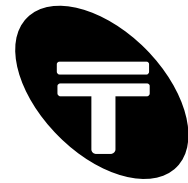
Table 1: RS232 to 3.3V TTL (420X) Model Variations

Model No.	Built-in PSU (3.3V regulator)	Signal Support	TTL Connector	Status LEDs
4204	Yes	TX,RX,RTS,CTS	6-pin 2.54mm header (component side)	Power and TX/RX logic.
4205	(Optional)	TX,RX,RTS,CTS	6-pin 2.54mm header (PCB underside)	Power. Optional TX/RX logic.
4206	(Optional)	TX,RX. Optional RTS,CTS.	4-mini screw terminals (2.54mm pitch)	Power. Optional TX/RX logic.

2.1 Features List

A brief list of some of the features is given below:

- High speed, replaceable MAX3232 based. Device fitted supports up to 235kbps
- Works with PCs or Laptops
- Supports microcontroller UARTs – 3.3V TTL signal levels.
- Single DC supply: wide input range for 4204 or 3.3 to 5V for 4205 and 4206
- Small PCB footprint of 50×40mm
- Low current status LED(s)
- Very low power consumption
- Optional on board PSU for internal/external use for quick start out of the box.
- Power can be routed to pin 9 (if required) on RS232 connector – useful for specific applications.

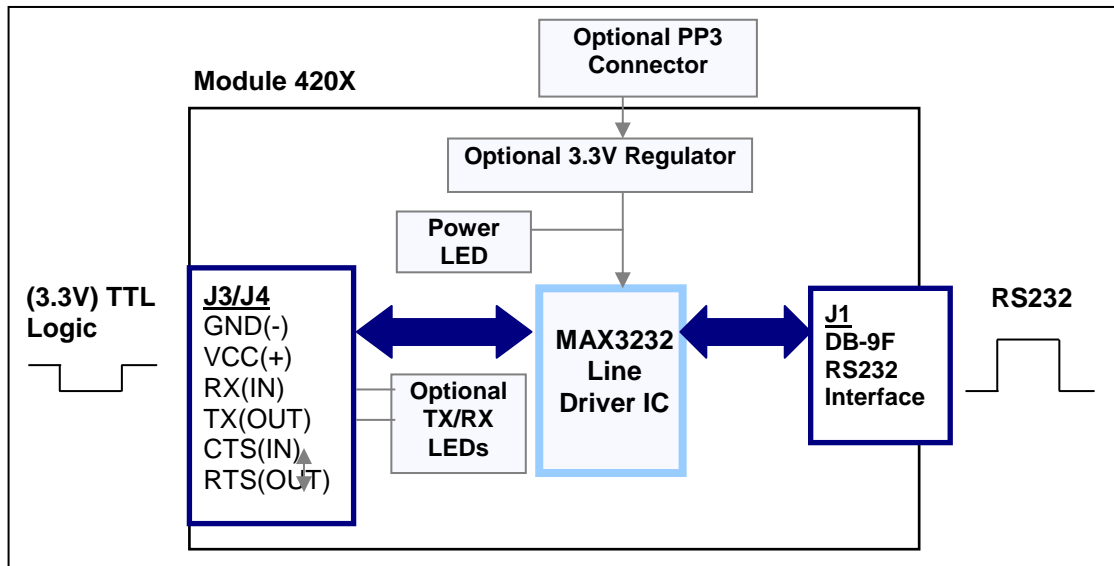


2.2 Block Diagram – RS232 To TTL Module

The 4204 module has an optional 3.3V regulator circuitry fitted as default to provide regulated 3.3V power to the module from a wide voltage range and is suitable for battery powered applications. Model 4205 and 4206 require 3.3V to be applied via the TTL connection end. Note that models 4205 and 4206 (being based on a MAX3232 device) can also work with a 5V supply for a 5V TTL connection.

See Figure 1 below. These modules have multiple connector options for the TTL logic level side. Model 4204 features a 6-pin 2.54mm header interfaces. Model 4205 has the 6-pin header at the underside of the board so that it may be used conveniently on “breadboard” or other such prototype boards. Model 4206 has screw terminals for simple wiring interface for a very common 4-pin interface (power, ground, TX and RX).

Figure 1: RS232 to 3.3V TLL - Module Block Diagram

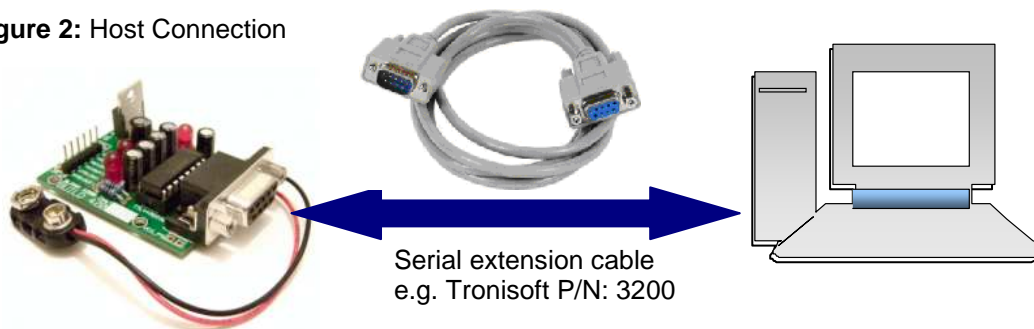


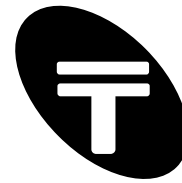
All models feature a low current power status LED to indicate that the module is powered. There are also additional status LEDs fitted as default on model 4204 that monitor at the TTL / logic level state of the TX and RX lines (which will flash on communication).

3 Hardware Description

The RS232 to TTL modules have two main ports - the TTL and RS232 connection as described below. Model 4204 however has an additional PP3 connector and on-board 3.3V regulator circuitry for battery powered use. A typical connection is via a simple straight through serial cable to a PC/laptop’s serial port:

Figure 2: Host Connection





RS232 To 3.3V TTL User Guide

3.1 Power Supply

Models 4205 or 4206 do not have the regulator IC fitted and requires a 3.3V supply via J3/J4.

The 4204 module may be powered using an external power supply or battery connected via the attached "PP3" connector. For simple power supply requirements the 4204 module features a built in voltage regulator for operation with a wide voltage range. The input voltage +V is regulated using an low drop LD1117V33 IC based voltage regulator to the voltage used internally by the module called VCC(+) and is typically 3.3V DC. This is also connected to the TTL connection end at J3/J4 and is not normally connected but if used to power external circuitry do not exceed the capabilities of LD1117V33 IC regulator. You can typically draw up to 500mA from VCC(+) without any problems. It is recommended that you keep the input voltage below 12V and use a heatsink if dissipating too much power – again please refer to LD1117V33 datasheet.

3.2 Digital 3.3V TTL Connection

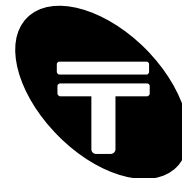
This is a 6-pin 2.54mm header on models 4204 and 4205. The TTL connection end has connectors marked J3 and J4 which are electrically connected together for multiple connection builds. Model 4206 is fitted with 4 screw terminal for a simple 4-wire interface suitable for quick wiring. The other 2 signal pins are still available on the board.

Table 2: TTL connection

J3/J4 Pin Number	Signal Name	Description
1	GND	This is the ground pin and should be connected to the 0V rail of the application hardware.
2	VCC(+)	For model 4205 and 4206: this pin requires 3.3V to be supplied to the board for power. For model 4204: leave unconnected (see section 3.1).
3	RX (input - from UART into PC)	This pin is usually connected to the TX output pin of the UART in the microcontroller. This is an input pin.
4	TX (output - from PC to UART)	This pin is usually connected to the RX pin of the UART in the microcontroller. This is an output pin and will be data from the RS232/PC side of the converter.
5	CTS (input - from UART into PC)	This pin is part of the RS232 "Hardware Flow Control" system. Normally this signal is used by the UART to flag to the PC when the UART is ready to receive data. However, because of the various interpretations of the RS232 "standard", the exact way this signal may be used will change from system to system.
6	RTS (output - from the PC to the UART)	This pin is part of the RS232 "Hardware Flow Control" system. Normally this signal is used by the PC to flag when the microcontroller can send data. However, because of the various interpretations of the RS232 "standard", the exact way this signal may be used will change from system to system.

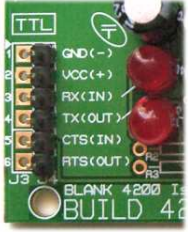

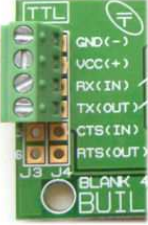
IMPORTANT NOTE (Model 4204 only)

Do not apply power to the VCC(+) pin for model 4204. This pin actually supplies regulated 3.3V from the on-board PSU and connects to the VCC(+) pin at J3/J4. On this model power may however be drawn from the VCC(+) to provide some low power to related circuits such as a microcontroller.



RS232 To 3.3V TTL User Guide

Table 3 Physical TTL Connector Variations

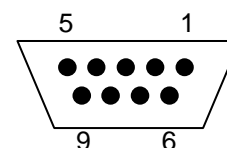
Model	TTL connection	Image
4204	6-pin (2.54mm pitch) on component side.	
4205	6-pin (2.54mm pitch) on underside ideal for "breadboarding" applications.	
4206	4 screw terminals (2.54mm pitch) for simple 4-wire wiring interface.	

3.3 RS232 Port (9 pin D female)

The module connection to a host computer is via J1. J1 is a 9 way D-SUB female connector. A standard serial extension cable (pin 1 to pin1, pin 2 to pin 2 etc.) may be required to connect to a host computer. The module supports baud rates typically at 235kpbs.

Table 4: Module RS232 Interface

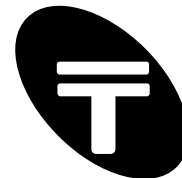
DB9 (Female)	Signal Name and Notes	Direction (Module → PC)
1	CD (Carrier Detect)	- See note (c) below
2	TXD (Transmit Data)	Output
3	RXD (Receive Data)	Input
4	DSR (Data Set Ready)	- See note (c) below
5	GND (System Ground)	-
6	DTR (Data Terminal Ready)	- See note (c) below
7	CTS (Clear to Send)	Input
8	RTS (Request to Send)	Output
9	N/C (Not connected). Optionally VCC(+) may be routed here if VCC_P9 is linked on the module – use carefully!	(Optional output)



DB9 pin D-SUB female

Note:

- a) Signal names here are with respect to the "RS232 To TTL" module.
- b) Direction is from module (DCE) to the computer (DTE) e.g. pin 2 (TXD) is the module's output pin and will normally connect to pin 2 of the serial port on a computer using a standard serial extension cable.
- c) Pins 6,4 and 1 are connected together to provide DTR/DSR "loopback" connection for the computer's serial port.



RS232 To 3.3V TTL User Guide

3.4 Status LEDs

All modules feature a power status LED to indicate that the module is powered.

Model 4204 also has two further communication status LEDs indicating the logic levels of the TX and RX lines at the TTL connection on J3/J4.

All LEDs used are high brightness, low current and are driven through a 1K0 resistor.

Table 5: Status LED Descriptions

Status	Description
POWER (D1)	Stays on red when power applied.
RX LED (D3)	This flashes red albeit very fast depending on the communication baud rate.
TX LED (D2)	This flashes red albeit very fast depending on the communication baud rate.

3.5 Module Specification

3.5.1 Power Supply

Model 4204

Input Supply Voltage: 4.75 to 12V +/- 5%. Higher voltages may require an adequate heatsink to be fitted to the on-board voltage regulator depending on the load at VCC(+). Refer to the LD1117V33 IC regulator datasheet for more information.

Internal Regulated Voltage VCC(+): Linear 3.3V, 2% typical accuracy.

Input Current: 12-22mA typically for basic device operation. Maybe much lower or higher depending on load and source current required.

VCC(+) current source capability: Typically 500mA at stated input voltage range. May require heatsink; depends on ambient temperature, input voltage, current output required.

Model 4205/4206

Input Supply Voltage: 3.3V +/- 5% or 5V +/- 5% may be supplied if 5V TTL logic required.

Input Current: 6-15mA typically. Maybe much lower on low loads.

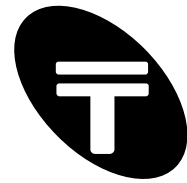
3.5.2 Host Connection / RS232 Line Drivers

Connection: RS232 / serial port, 9 Way D-type socket connector.

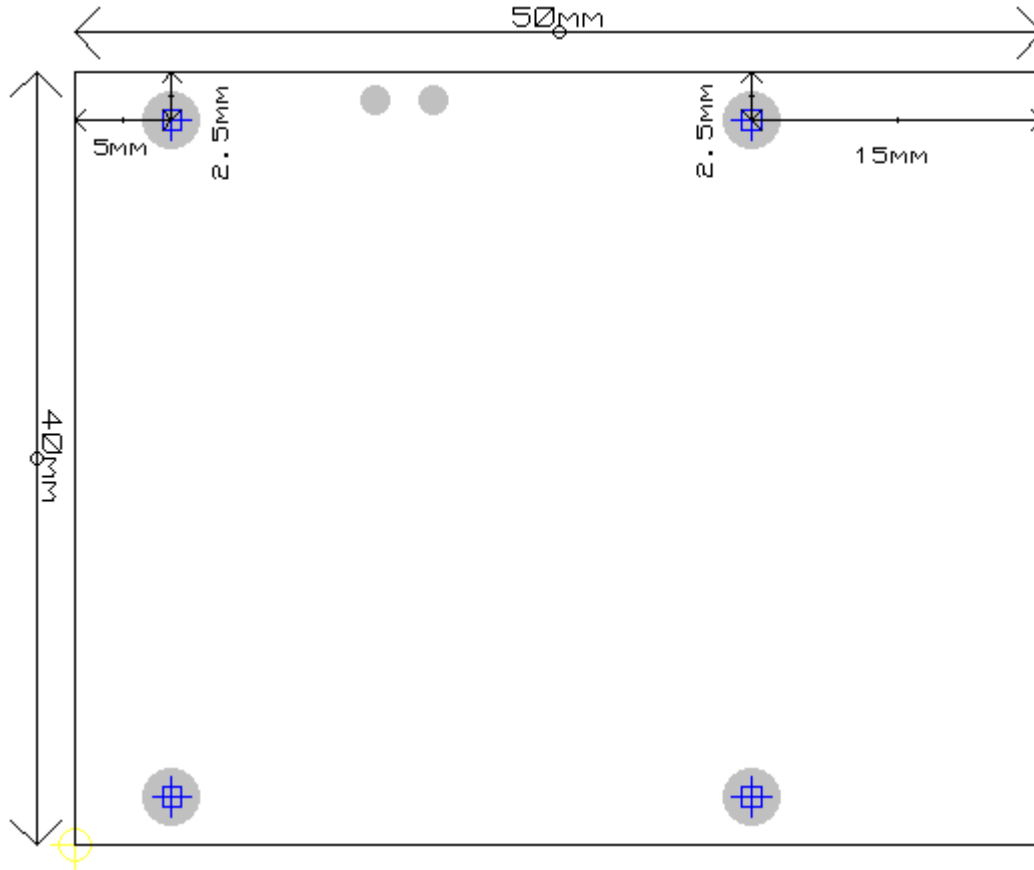
Line Drivers: Industry standard RS232 line driver - meets full EIA/TIA-232D specifications.

3.5.3 MAX3232 Line Driver Electrical Characteristics

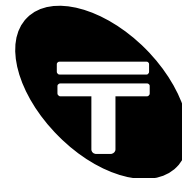
Refer to datasheet for the MAX3232 device used on the board.



3.6 Board Outline and Mounting Holes



Board Outline: 50X40mm
Mounting Holes: 4 X 3mm



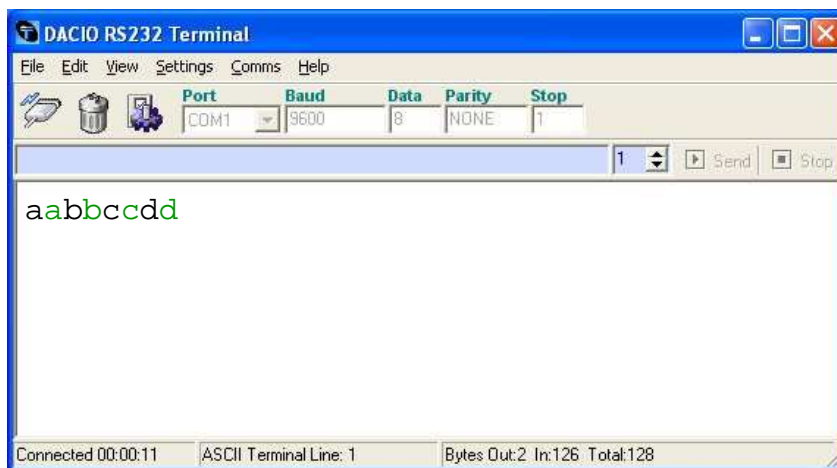
RS232 To 3.3V TTL User Guide

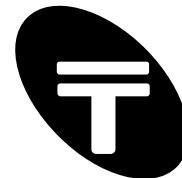
Quick Start – Demonstration

The module may be quickly tested via a “loopback” test using most serial port terminal emulators. For a basic test use the following steps:

- 1) Connect the module using a standard serial extension cable (e.g. Tronisoft P/N: 3200) to a computer's serial port - say COM1. If your computer or Laptop does not have a serial port then you can use a USB to serial port adapter (e.g. Tronisoft P/N: 2454 or 2455) assuming it does at least have a USB port!
- 2) Run the DACIO RS232 Terminal (or a terminal emulator such as HyperTerminal configured to use e.g. COM1 and with line settings of 9600 baud, 8 data bits, no parity and no handshaking).
- 3) Connect the TX/RX lines together at connector J3 (or J4) e.g. you can jumper pins 3&4 on model 4204. Now apply power. If the module is up and running then note that power status LED D1 (and D2, D3 on model 4204) should be lit red.
- 4) Type e.g. 'abcd' on the DACIO RS232 Terminal (or HyperTerminal) screen. Anything typed on screen is sent to the module and routed back (looped back) to the host computer's input. Therefore the terminal screen will echo any characters on screen resulting in the display as shown below.

Figure 3: DACIO RS232 Terminal / Serial Port Monitoring Application





Appendix A – Pinout and Signals for the PC RS232 Connector

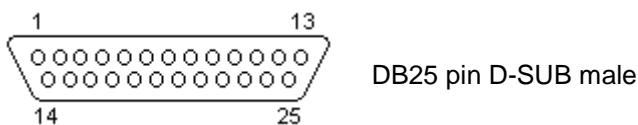
DB9 RS232 Port (IBM PC XT/AT)



Pin	Signal Name	Direction (DTE ← DCE)
1	CD (Carrier Detect)	←
2	RXD (Receive Data)	←
3	TXD (Transmit Data)	→
4	DTR (Data Terminal Ready)	→
5	GND (System Ground)	-
6	DSR (Data Set Ready)	←
7	RTS (Request to Send)	→
8	CTS (Clear to Send)	←
9	RI (Ring Indicator)	←

Note: a) Signal names are with respect to the computer/PC. b) Direction is from peripheral/modem (DCE) to the computer (DTE) e.g. RXD is the computer's input pin.

DB25 RS232 Port



Pin	Signal Name	Direction (DTE ← DCE)
1	SHIELD (Shield/Protective Ground)	-
2	TXD (Transmit Data)	→
3	RXD (Receive Data)	←
4	RTS (Request to Send)	→
5	CTS (Clear to Send)	←
6	DSR (Data Set Ready)	←
7	GND (System Ground)	-
8	CD (Carrier Detect)	←
9	n/c	-
10	n/c	-
11	n/c	-
12	n/c	-
13	n/c	-
14	n/c	-
15	n/c	-
16	n/c	-
17	n/c	-
18	n/c	-
19	n/c	-
20	DTR (Data Terminal Ready)	→
21	n/c	-
22	RI (Ring Indicator)	←
23	n/c	-
24	n/c	-
25	n/c	-

Note:

- a) Signal names here are with respect to the computer/PC.
- b) Direction is from peripheral/modem (DCE) to the computer (DTE) e.g. RXD is the computer's input pin.
- c) Do not connect SHIELD(1) to GND(7)